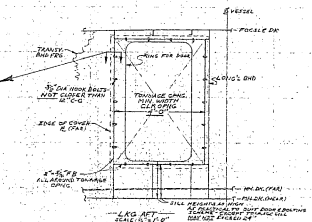
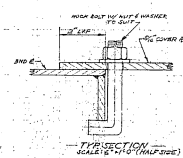
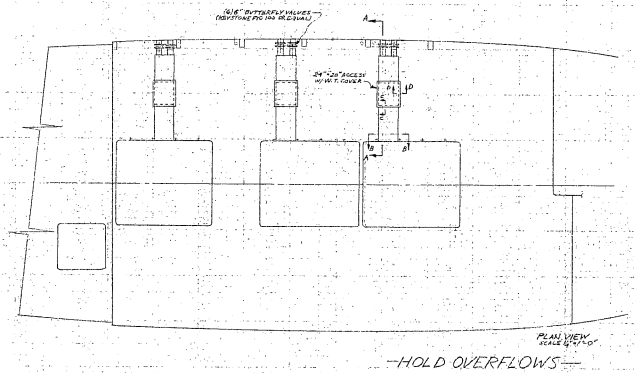


SW. CIRC. PUMP SUPPORTS



TONNAGE OPENING

BY JENSEN & ASSOCIATES
JUN 365 - 32' 21V
11/11/74

Exhibit 199
Page 27a of 36

NO.	REVISIONS	BY	DATE
1	B. F. JENSEN & ASSOCIATES		
101 SALMON BAY OFFICE BLDG. (AREA 080000) 403 1/2 1/4 AVE. WEST SEATTLE WASHINGTON 98109			
92 FT FISHING VESSEL MISC. DETAILS			
CHECKED: SCALE: AS NOTED DRAWN:	DATE: NOV 1974 DWG. NO: 365-26		